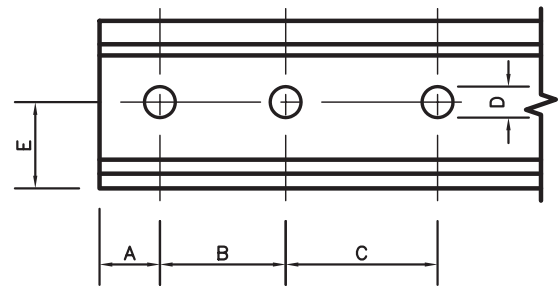
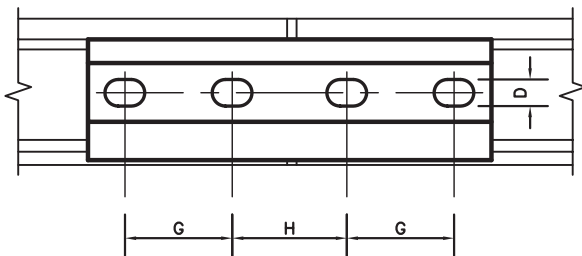


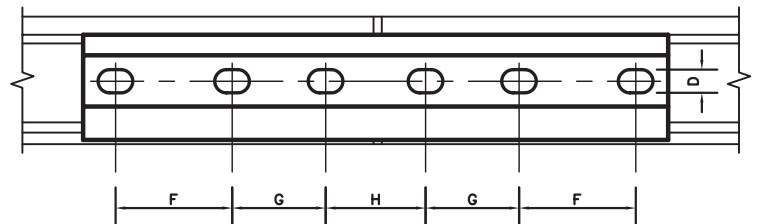
Rail Drilling for Splice Bars - 2 Hole  
Standard for Rail Sections 12#-100#



Rail Drilling for Joint & Crane Rail Bars - 3 Hole  
Standard for Rail Sections 115# - 175#



Side view of bar with hole punching - 4 hole



Side view of bar with hole punching - 6 hole

Rail Section	Rail End Drilling				Bar Punching			
	A	B	C	D	E	F	G	H
12# ASCE	2"	4"	NA	9/16"	57/64"	NA	4"	4"
20# ASCE	2"	4"	NA	9/16"	1-11/64"	NA	4"	4"
25# ASCE	2"	4"	NA	9/16"	1-15/64"	NA	4"	4"
30# ASCE	2"	4"	NA	11/16"	1-25/64"	NA	4"	4"
40# ASCE	2 1/2"	5"	NA	15/16"	1-9/16"	NA	5"	5"
60# ASCE	2 1/2"	5"	NA	15/16"	1-29/32"	NA	5"	5"
80# ASCE	2 1/2"	5"	NA	1"	2.38"	NA	5"	5"
85# ASCE	2 1/2"	5"	NA	1-1/8"	2.47"	NA	5"	5"
90# ARA-A	2-11/16"	5 1/2"	NA	1-1/8"	2.54"	NA	5 1/2"	5-3/8"
100# AREA	2-11/16"	5 1/2"	NA	1-1/8"	2.75"	NA	5 1/2"	5-3/8"
115# AREA	3 1/2"	6"	6"	1-1/8"	2.98 "	6"	6"	7"
132# AREA	3 1/2"	6"	6"	1-3/16"	3.20 "	6"	6"	7"
104# Crane	4"	5"	6"	1-1/16"	2-7/16"	6"	5"	8"
105# Crane	4"	5"	6"	13/16"	2-13/64"	6"	5"	8"
135# Crane	4"	5"	6"	1-3/16"	2-15/32"	6"	5"	8"
171# Crane	4"	5"	6"	1-3/16"	2-5/8"	6"	5"	8"
175# Crane	4"	5"	6"	1-3/16"	2-21/32"	6"	5"	8"

Chart - Standard Rail and Bar Punching or Drilling