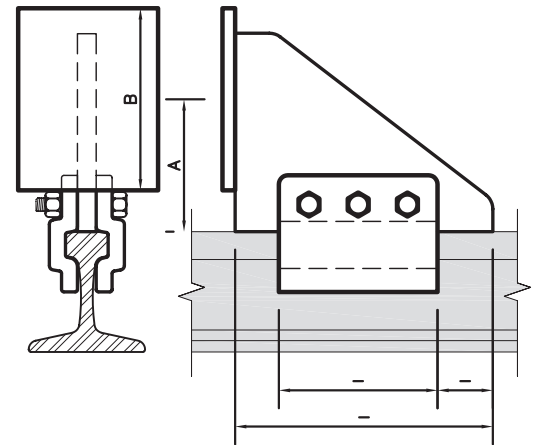
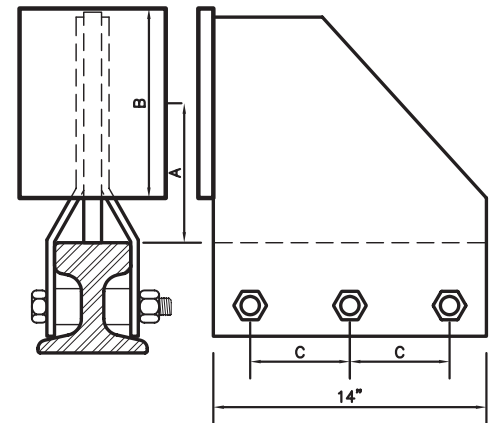


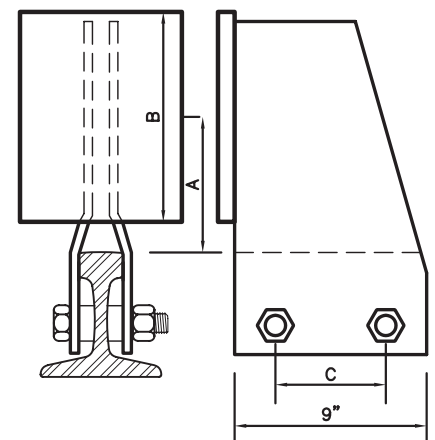
Rail Size	Distance from Rail to Center of Bumper (Adjustable)	Distance from Rail to Center of Bumper (Fixed)	Size of Plate
12# ASCE	8"	8"	1/2" X 4" X 12"
20# ASCE	8"	7 1/2"	1/2" X 4" X 12"
25# ASCE	8"	7 1/2"	1/2" X 4" X 12"
30# ASCE	8"	7"	1/2" X 4" X 12"
40# ASCE	8"	7"	1/2" X 4" X 12"
60# ASCE	8"	7"	1/2" X 4" X 12"
80# ASCE	8"	6 1/2"	1/2" X 4" X 12"
85# ASCE	8"	6 1/2"	1/2" X 4" X 12"
90# ARA-A	8"	6"	1/2" X 4" X 12"
100# AREA	8"	5 1/2"	1/2" X 4" X 12"
115# AREA	8"	5"	1/2" X 4" X 12"
132# AREA	8"	4 1/2"	1/2" X 4" X 12"
104# Crane Rail	8"	6 1/2"	1/2" X 4" X 12"
105# Crane Rail	8"	6 1/2"	1/2" X 4" X 12"
135# Crane Rail	8"	5 3/4"	1/2" X 4" X 12"
171# Crane Rail	8"	5 1/2"	1/2" X 4" X 12"
175# Crane Rail	8"	5 1/2"	1/2" X 4" X 12"
A45	8"	NA	1/2" X 4" X 12"
A55	8"	NA	1/2" X 4" X 12"
A 65	8"	NA	1/2" X 4" X 12"
A75	8"	NA	1/2" X 4" X 12"
A100	8"	NA	1/2" X 4" X 12"
A120	8"	NA	1/2" X 4" X 12"



Adjustable



Heavy Duty Fixed



Standard Fixed